



ALMA
FUERTE
FARM





ALMA FUERTE LEADERSHIP VALUES

As a small team, we can make decisions and changes fast. We welcome all perspectives and think through how changes/ideas impact our community as a whole.

We prioritize classroom support over administrative support in staffing as well as spending.

Our decisions are guided by the following core values:

- Inclusion
- Students First/Open Door
- Community
- Transparency
- Restorative Practices

We empower our staff to advocate for any needs that they see no matter how small. We give our staff the opportunity to take ownership of special projects that develop their leadership skills and professional growth goals.

WE STAND OUT



Alma Fuerte is a small but mighty tight-knit community!
Every single student gets to know every staff member.
Everyone has opportunities to impact the greater school community.

Community School

- Our community is our strongest asset
- Stakeholder Input
- Partnerships for parents/ MFT for parents, Workshops (teen dating, oral health, mental health, earthquake preparedness), HS Applications and Tours

Entrepreneurship

- Student-led Project-Based Learning Opportunities
- Maker Space
- Instructional Kitchen
- Business Fairs 3X a year

Electives/ Extra Curriculars/ After School

Dance, music, art, and social-emotional learning, LEGO-robotics, Sports League with Stratford, Tutoring, Garden Ranger, Chess



WHO WE SERVE

Alma Fuerte serves a high-need and diverse student population

Total Students: 237

88%

Socioeconomically Disadvantaged

26%

Students with Disabilities

17%

English Learners



78%

Hispanic/Latino

17%

Black/African American

5%

Other

DEMOGRAPHIC COMPARISON

2025						
SCHOOL	ALL GROUPS	BLACK	HISPANIC	ENGLISH LEARNERS	SOCIO-ECONOMICALLY DISADVANTAGED	STUDENTS W/ DISABILITIES
Alma Fuerte Public School	227	15%	77%	21%	78%	23%
Altadena Elementary Magnet	527	12%	44%	7%	53%	16%
Madison Elementary	411	4%	95%	43%	81%	13%
Washington Elementary Magnet	428	10%	82%	33%	87%	19%
Mary W. Jackson Elementary Steam Magnet	658	10%	63%	16%	52%	10%
Octavia Butler Magnet	481	9%	73%	18%	71%	11%
Eliot Arts Magnet	407	22%	54%	5%	75%	24%

DASHBOARD COMPARISON: DISTANCE FROM STANDARD

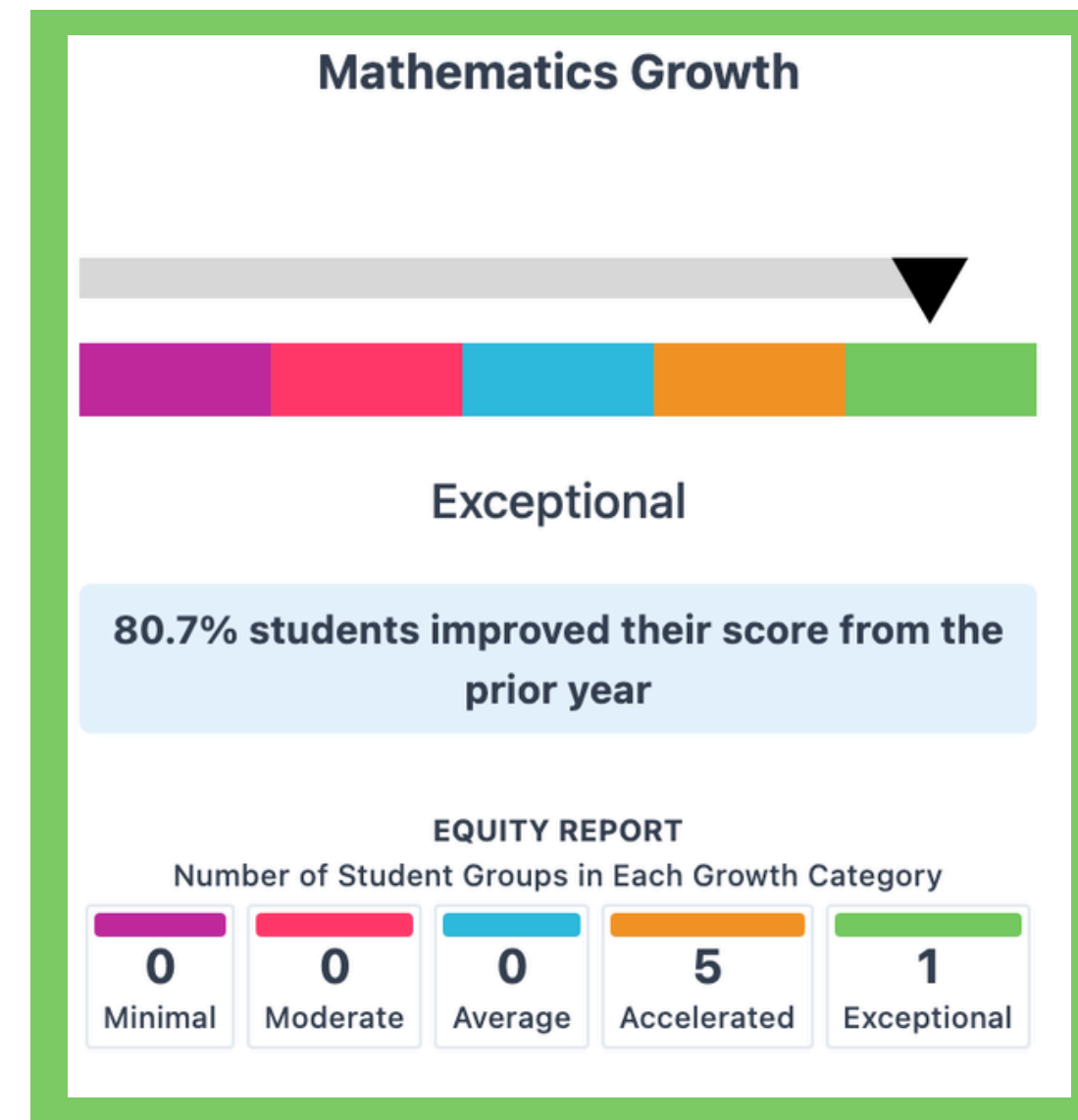
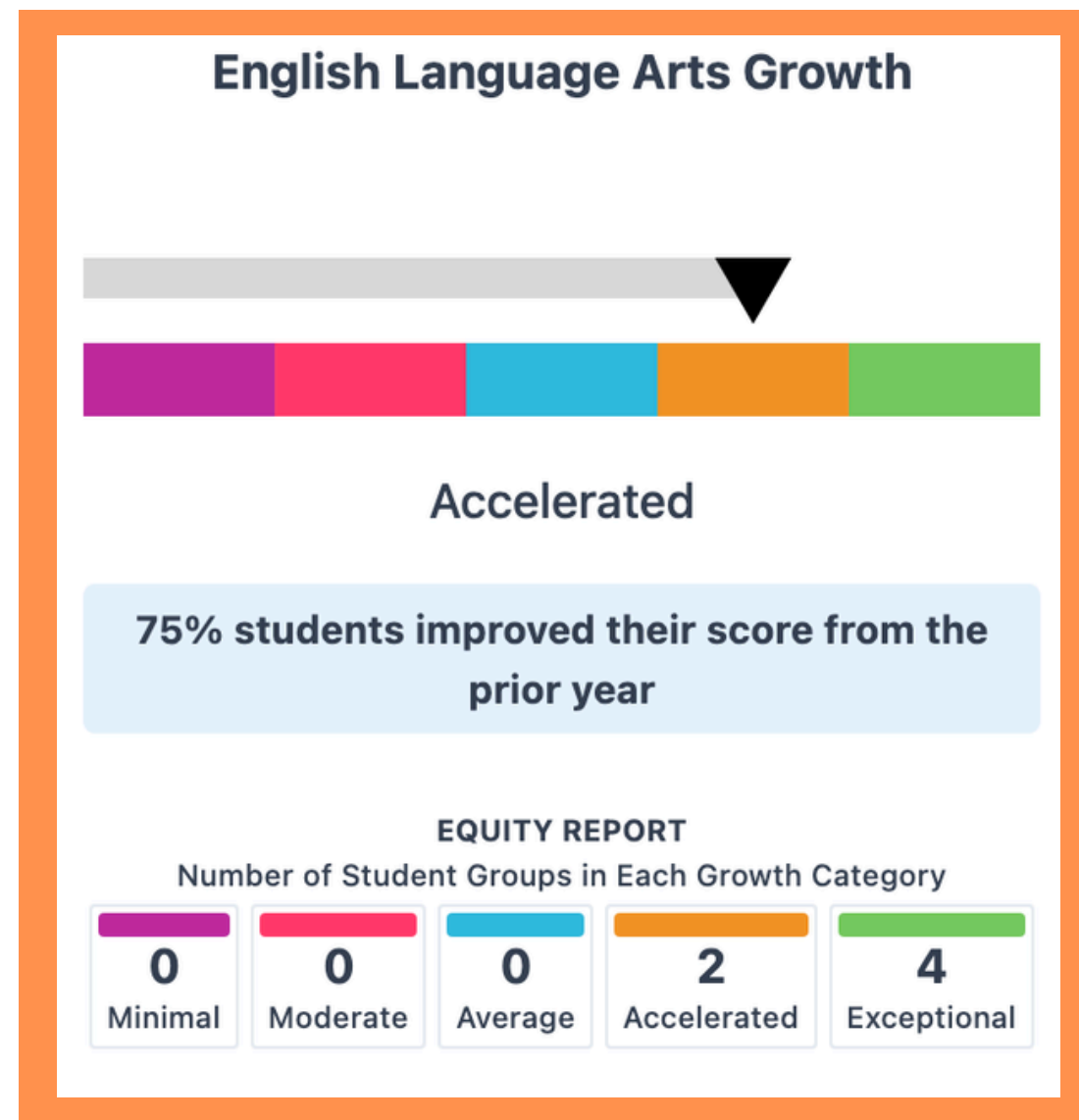
2025 - ELA						
SCHOOL	ALL GROUPS	BLACK	HISPANIC	ENGLISH LEARNERS	SOCIO-ECONOMICALLY DISADVANTAGED	STUDENTS W/ DISABILITIES
Alma Fuerte Public School	-55	-66	-54	-68	-61	-49
Altadena Elementary Magnet	-1.2	-78	-14	-39	-26	-66
Madison Elementary	-82	n/a	-83	-96	-82	-102
Washington Elementary Magnet	-41	-82	-45	-75	-41	-116
Mary W. Jackson Elementary Steam Magnet	-25	-93	-47	-89	-71	-139
Octavia Butler Magnet	-44	-86	-65	-115	-91	-141
Eliot Arts Magnet	-59	-90	-73	-97	-69	-107

DASHBOARD COMPARISON: DISTANCE FROM STANDARD

2025 - MATH						
SCHOOL	ALL GROUPS	BLACK	HISPANIC	ENGLISH LEARNERS	SOCIO-ECONOMICALLY DISADVANTAGED	STUDENTS W/ DISABILITIES
Alma Fuerte Public School	-84	-89	-86	-102	-88	-122
Altadena Elementary Magnet	-9	-75	-34	-33	-31	-51
Madison Elementary	-88	n/a	-89	-100	-88	-99
Washington Elementary Magnet	-50	-88	-56	-77	-50	-105
Mary W. Jackson Elementary Steam Magnet	-43	-113	-66	-104	-88	-144
Octavia Butler Magnet	-91	-134	-113	-160	-126	-184
Elliot Arts Magnet	-121	-156	-138	-150	-130	-166

DASHBOARD SHOWS STRONG STUDENT GROWTH

Growth compares students to academic peers statewide. CA Dashboard shows that Alma Fuerte students are improving faster than expected.



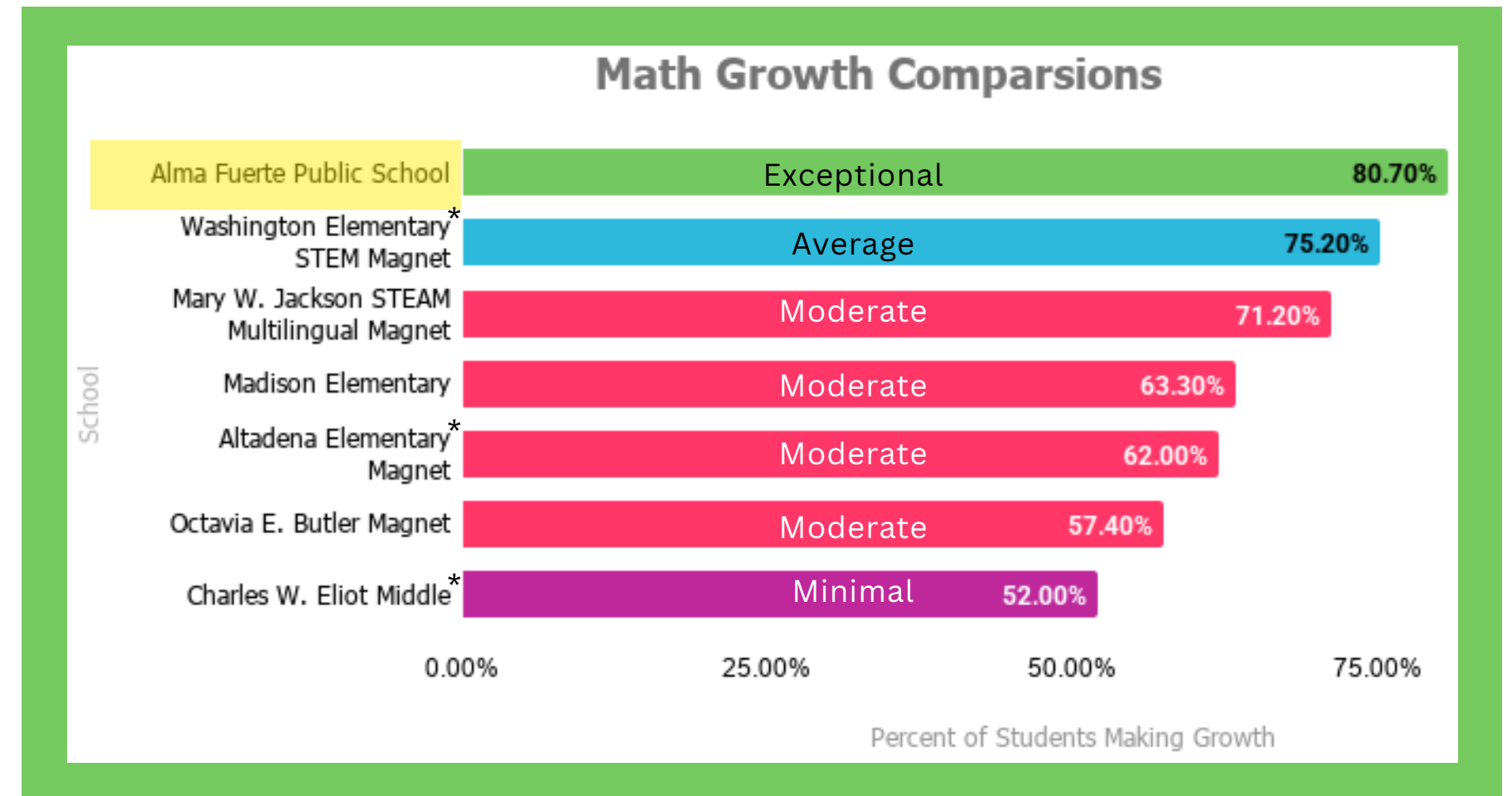
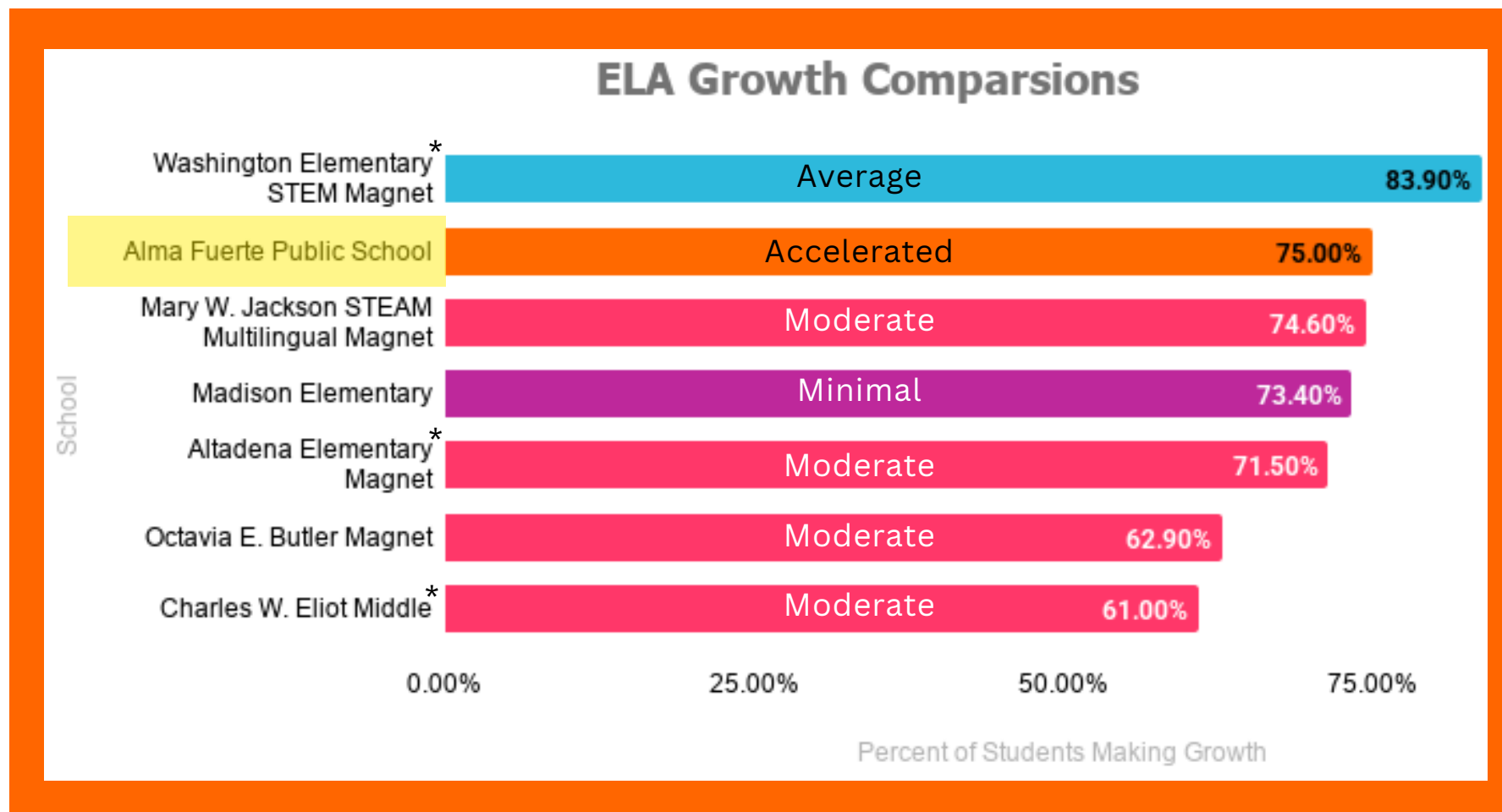
Equity: **ALL** student groups show accelerated or exceptional growth.

Next Focus:	Translate growth into increased SBAC proficiency
--------------------	--

GROWTH COMPARED TO NEARBY SCHOOLS

Alma Fuerte demonstrates strong student growth relative to neighboring schools

- One of the only schools identified as Accelerated/Exceptional across subjects
- Indicates students are improving at a faster rate than neighboring schools



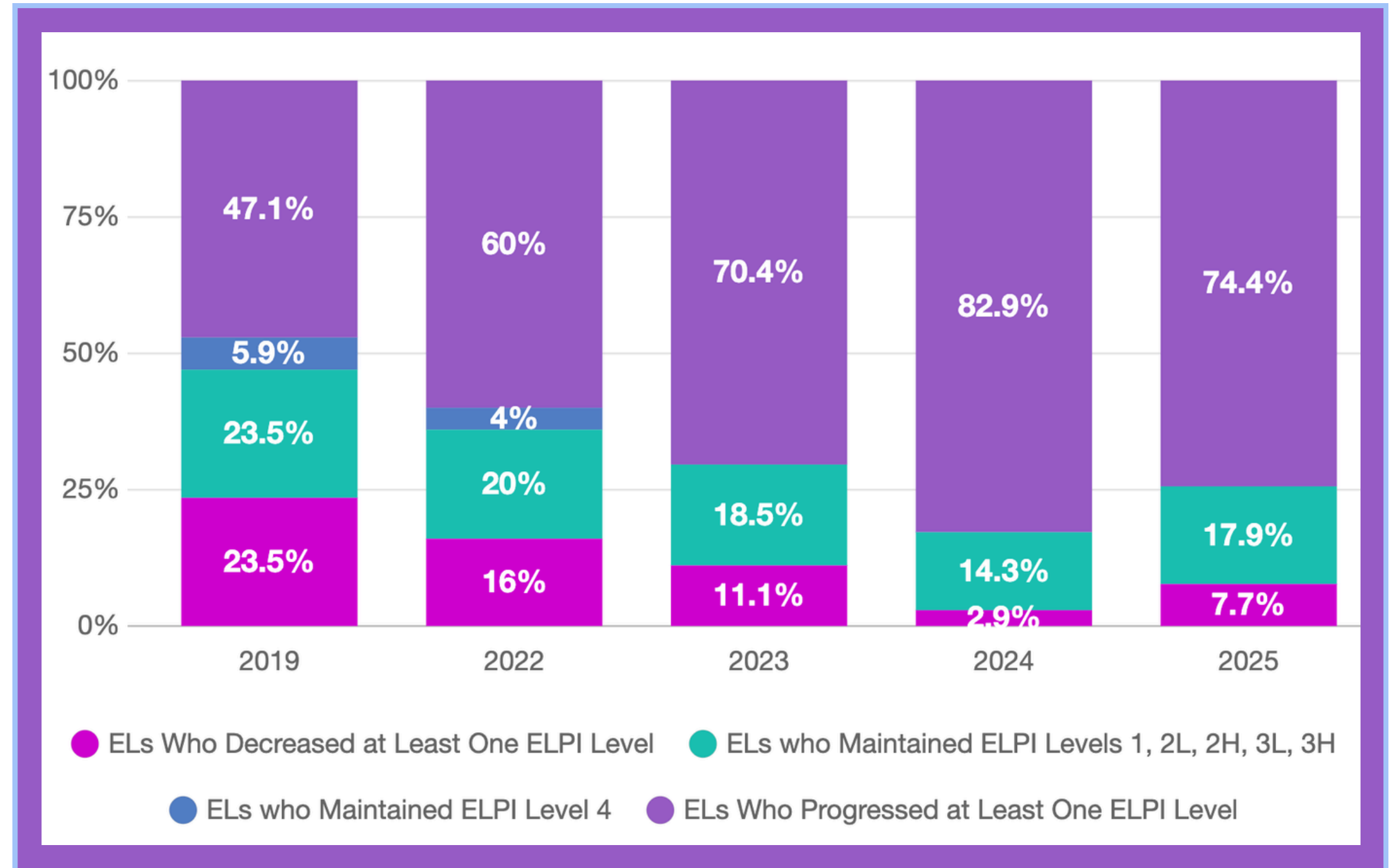
*School is currently being considered for consolidation by PUSD.

- % Improving = how many students increased their score
- Growth Category = how much students improved compared to expectations

SUSTAINED ENGLISH LEARNER PROGRESSION OVER TIME

English Learners are consistently progressing in language proficiency over the years.

- Percentage of ELs progressing at least one level has increased over time
- Fewer students are decreasing in proficiency levels



ELPI can fluctuate year to year, but long-term trends show sustained growth in language acquisition. **Students are building the language foundation needed for long-term academic success**

FISCAL STABILITY

NO COVID CLIFF

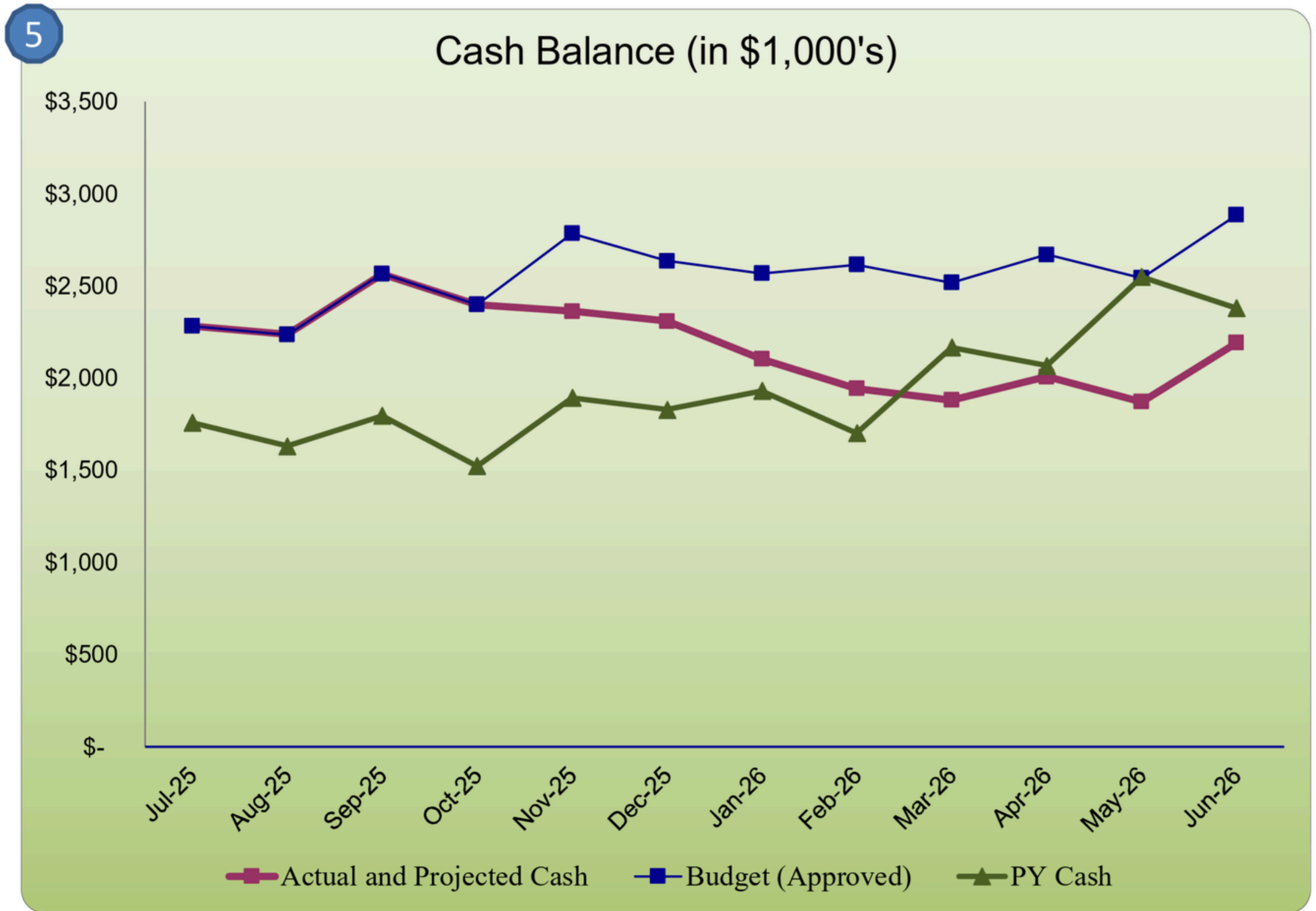
We have diligently pushed out funds to ensure our programming is sustainable without depending on covid funding.

LET'S STAY SMALL

With an enrollment of just under 300, we will be sustainable. We also feel that this number allows us to balance sustainability with our personal touch.

"THIS IS THE MOST EFFICIENT USE OF FUNDS I'VE EVER SEEN."

-VO CHAN



MARCH 2026

GOVERNANCE

ALMA FUERTE DOES NOT HAVE ANY GOVERNANCE FINDINGS.

5/5 OF ALMA FUERTE'S BOARD MEMBERS HAVE BEEN WITH THE SCHOOL AND ON THE BOARD SINCE IT OPENED, 8 YEARS AGO.



LOOKING AHEAD

\$200K Farm to Fork & Chef Anne Salad Bars to Schools Grant "Planting Entrepreneurs"

Our goal is to enhance the consumption of locally sourced, minimally processed foods and exposing students to a diverse range of career opportunities within the culinary and food industries.

ASES & ELOP

Community Schools Implementation Grant

\$80K CTE Grant

\$1.45 Million in CSFIG (Prop 2- Facilities) Grant

\$80K CYBHI

SMAA & BOPP

Restructuring for the next 8 years of Alma Fuerte

Charter Renewal



MIDDLE

SCHOOL

In grades 6-8 Alma Fuerte students start to look upwards and outwards towards their future, the greater Pasadena community, high school, and beyond.

Students explore their interests via field-trips, service, and project-based learning.

Continual Improvement of Middle School

01. **Culture of Excellence**

- Behavioral Expectations
 - Academic Expectations
 - Attendance Expectations
-

02. **Alumni Panel Interview**

- Strengths/ Weaknesses
 - Input from all levels of staff
-

03. **Work Wear Wednesdays**

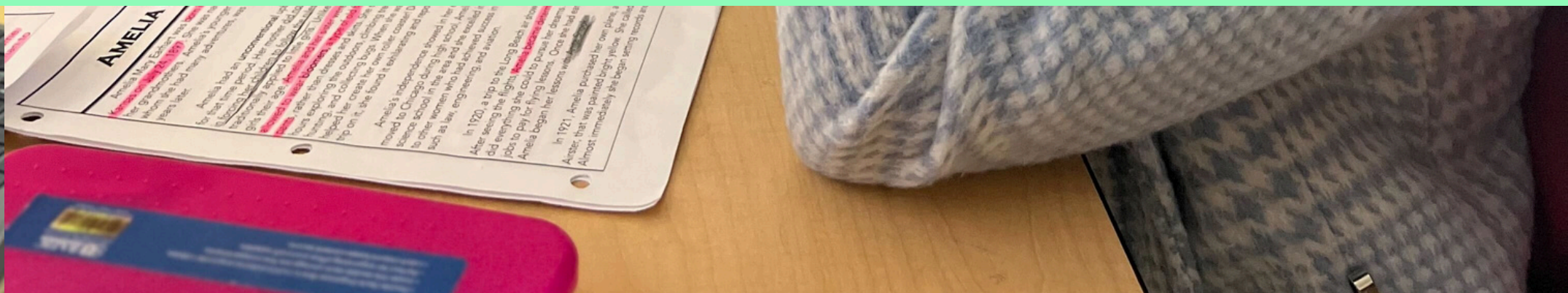
- Professional Apparel on Wednesdays
 - Uniforms (polo shirt) all other days
-

04. **Electives/ Extra Curriculars**

- Student-run Cafe
- Service Hours
- Weekly opportunities for enrichment



PREPARING THE NEXT GENERATION OF BUSINESS LEADERS





CAREER AND TECHNICAL TRAINING



A MASTER CHEF STYLE INSTRUCTIONAL KITCHEN AND STUDENT-RUN CAFE



